

Configuring Globus with ICBR as a HiPerGator Account Holder

Table of Contents

- [What is Globus?](#)
- [Target Audience & Prerequisites](#)
- [Configuring Globus](#)
- [Post-Configuration](#)
- [Additional Resources](#)



Target Audience

This document is intended for ICBR customers who **are** affiliated with the University of Florida and **have** a HiPerGator account.

What is Globus?

Globus is an easy-to-use, high-performance data transfer tool developed by the Computation Institute, the University of Chicago and Argonne National Laboratory. UF Research Computing has deployed Globus as one mechanism to facilitate data transfer to and from HiPerGator. Globus uses a grid-FTP network which uses the power of multiple servers to simultaneously transfer data.

Target Audience & Prerequisites

These instructions are geared towards ICBR customers that have an account on HiPerGator and would like us to deliver their data directly to HiPerGator.

Before You Start

Please make sure that you read all of these instructions when configuring your endpoint. Most issues that arise can be resolved with the information contained in this document.

Configuring Globus

Once you grant ICBR the correct permissions to your Globus Endpoint we can re-use it for future data deliveries.

1. Navigate to <https://www.globus.org/> and click **Log In** on the upper right-hand side

A blue rectangular button with the text 'Log In' in white, sans-serif font.

2. Under the "Look up your organization field" select **University of Florida**. Authenticate with your GatorLink credentials when prompted.

Log in to use Globus Web App

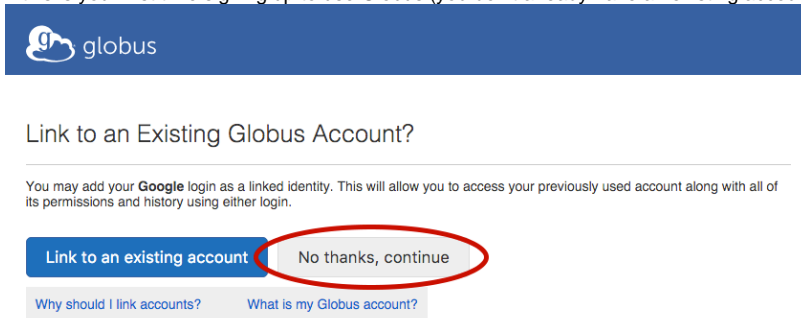
Use your existing organizational login

e.g., university, national lab, facility, project

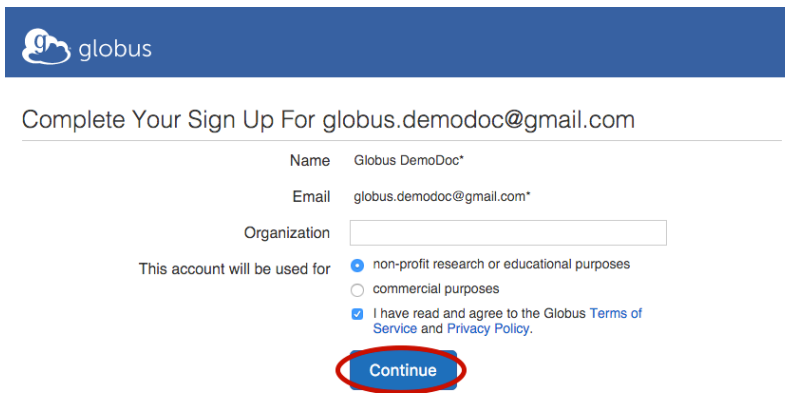
Didn't find your organization? Then use [Globus ID to sign in](#). ([What's this?](#))

A blue rectangular button with the text 'Continue' in white, sans-serif font.

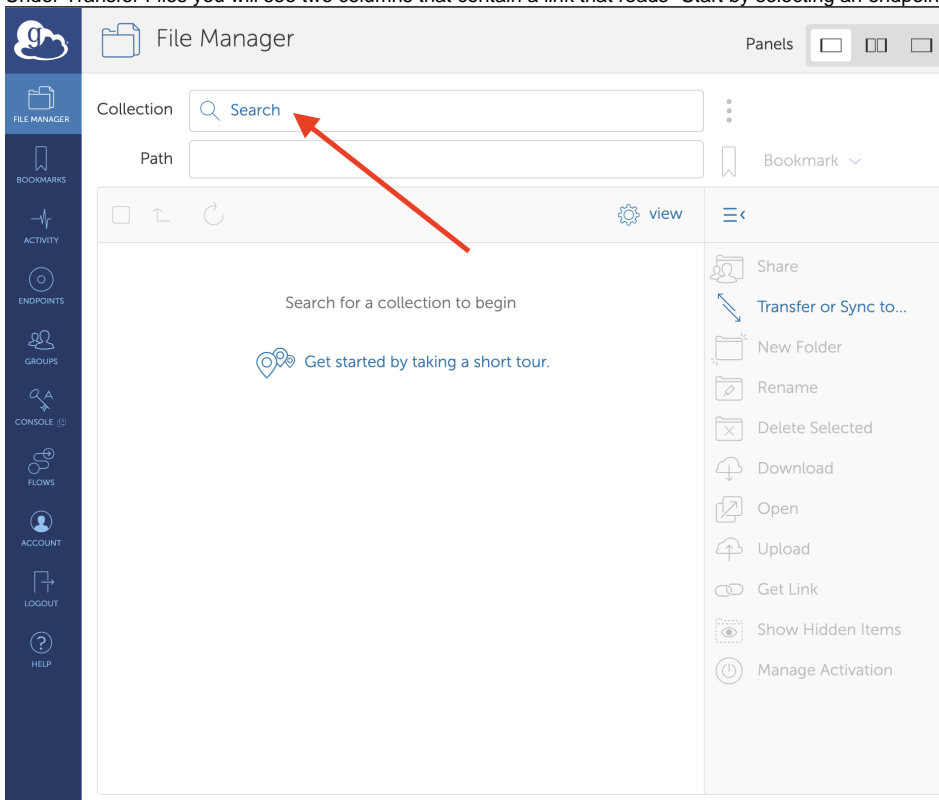
3. Once you've logged in with your GatorLink credentials, Globus will ask if you'd like to link to an existing account. If this is your first time signing up to use Globus (you don't already have an existing account), you'll click "No thanks, continue".



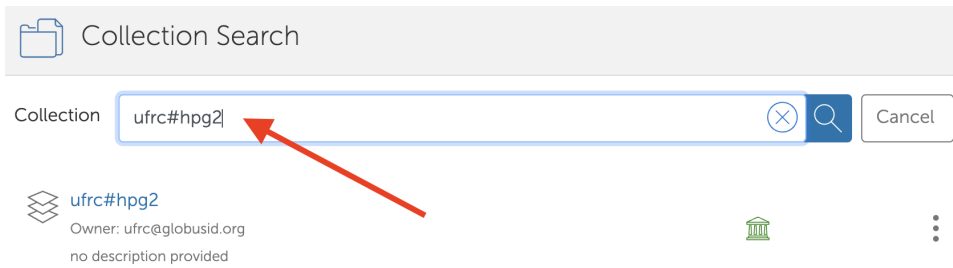
4. You may be prompted to provide additional information such as your organization's name and whether or not Globus will be used for commercial purposes. Please complete the form and click "Continue".



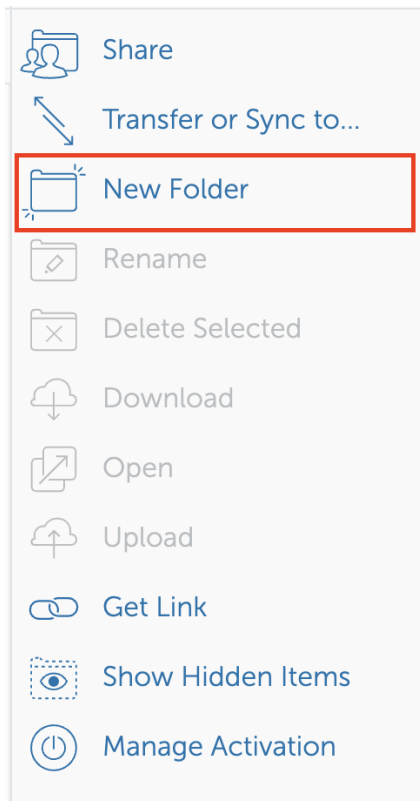
5. After you've signed up, you'll be sent to the Transfer Files page, or you can select **Transfer Files** from the Manage Data submenu.
6. Under Transfer Files you will see two columns that contain a link that reads "Start by selecting an endpoint," click the one on the left.



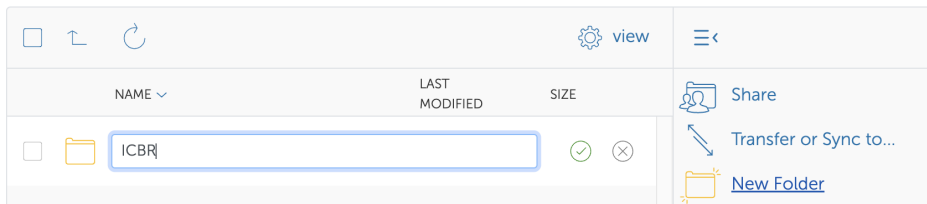
7. A window will open with a field containing the text "Start by typing the name of an endpoint..." Search for **ufrc#hpg2**.



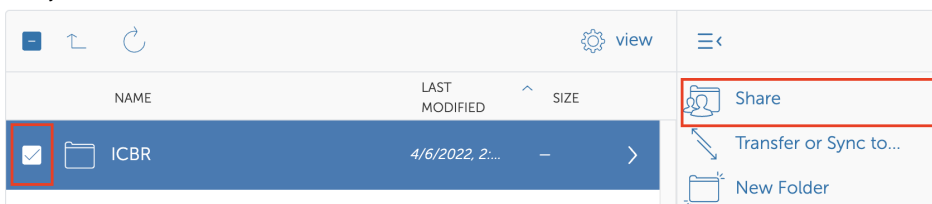
8. Click on **ufrc#hpg2**
9. When prompted, enter your GatorLink credentials and click on **Authenticate**.
10. Double-click on **orange** or **blue** and navigate to the Principal Investigators (PI) folder.
11. Once you're within the PI's folder, you will create a new folder that ICBR will use to upload data. You can create a folder by clicking the **New Folder** located on the upper right-hand side of the column. Click "**New Folder**"



12. Title the folder "**ICBR**" and click **Create**.



13. Once you have created the folder click on the folder and click on **share** on the bare above.



14. After you click on share you will be redirected to a page titled **Create New Shared Endpoint**. Within that page, add a **Share Display Name**.



The Share Display Name **must** contain the name of the institution, the lab and the PI. For example, UF-PathonenLab-Johnson

15. Click on **Create**.

16. Within the Sharing tab enter the following:

- a. Share With: user
- b. Identity/Email: enter ICBR-DataDelivery@ad.ufl.edu click on **Add**
- c. Check the box next to Send Email
- d. Permissions: read and write



It is important to grant **READ** and **WRITE** permissions. Without write permission ICBR will not be able to push data to the / CBR folder.

17. Click on **Add Permission**

Post-Configuration

Once you have completed these steps **ICBR Data Delivery** should receive a notification alerting them that they have been granted access to these Globus Endpoints.

Additional Resources

For more information on Globus and other useful documentation, please see the following:

- [Log In and Transfer Files with Globus](#)
- [Link a New Identity to an Existing Globus Account](#)
- [Share Data Using Globus](#)
- [Install and Configure Globus Connect Personal for Mac OS X](#)
- [Install and Configure Globus Connect Personal for Windows](#)
- [Install and Configure Globus Connect Personal for Linux](#)