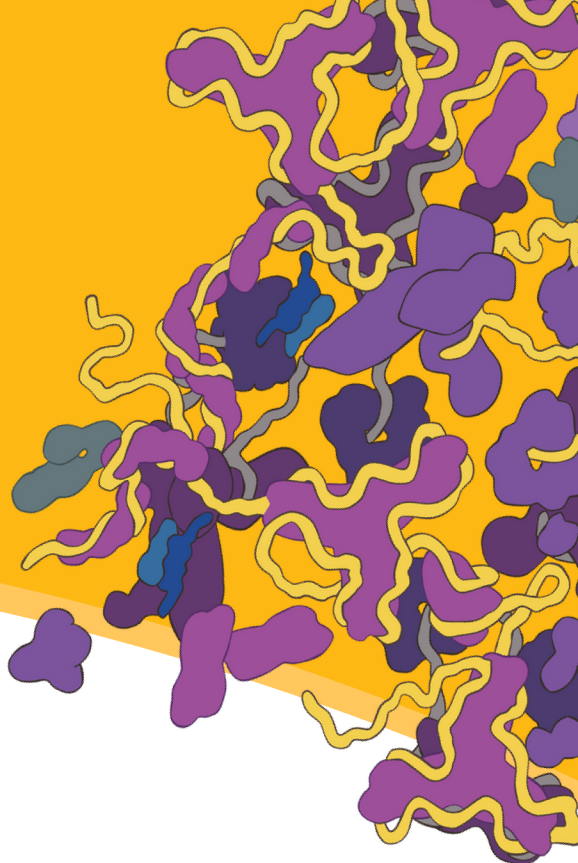


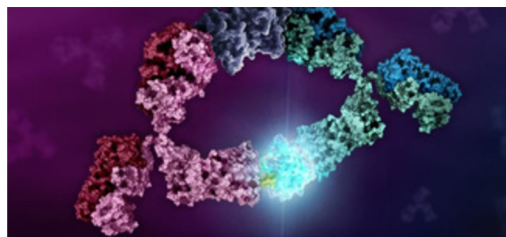
Transforming Drug Discovery:

Leveraging Promega technologies for robust assay development

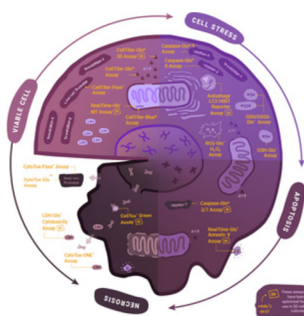
Join us for lunch and a discussion focused on Promega's latest assay development tools. The presentation will highlight Promega's diverse implementations of bioluminescence to enable discovery in translational research.



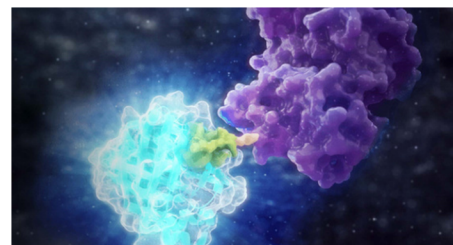
Key Topics:



- Fast, mix-and-read luminescent detection
- Replaces ELISA, HTRF, AlphaLISA in low-volume formats
- Detects:
 - cytokines
 - phospho/total proteins
 - protein:protein & protein:compound interactions



- Scalable, add-mix-read reagents for monitoring cell health indications in 2D & 3D cultures:
 - viability
 - proliferation
 - cytotoxicity
 - apoptosis & necrosis



- Ultra-small tag for detecting protein levels in real time
- Ideal for measuring:
 - GPCR internalization
 - Target Degradation
 - Protein secretion
 - Target cell killing

Speaker:



Julie Conkright-Fincham, PhD
Strategic Collaboration Manager
Promega Corporation



Date: 9/24/2025
Time: 12-1pm
Location: CGRC room 451

Register Here!