

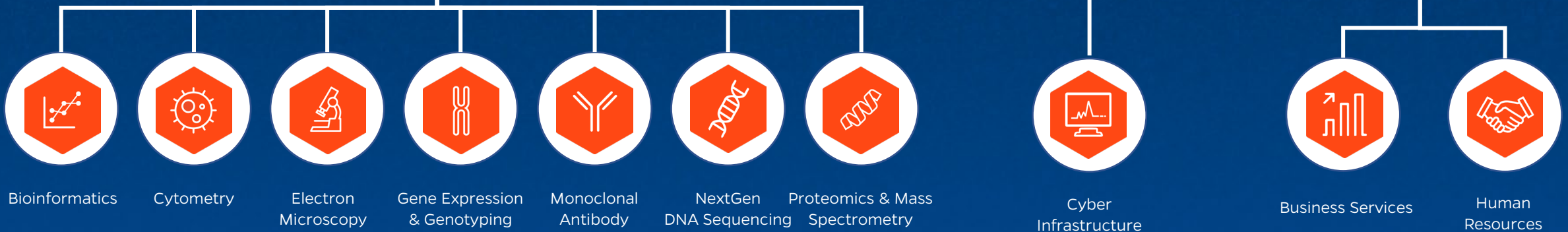
Anna-Lisa Paul, Ph.D.
Director



Steven Madore, Ph.D.
*Associate Director
Science*



Nadia Brown
*Assistant Director
of Operations*





Steven Madore, Ph.D.



Anderson Silva
*Scientific Director
Bioinformatics*



Fahong Yu, Ph.D.
*Scientist
Bioinformatics*



Massimiliano Tagliamonte, Ph.D.
*Assistant Scientist
Bioinformatics*



Emil Furat
*BI Analyst I,
Bioinformatics*





Cytometry & Optical Microscopy

[← Home](#)

Steven Madore, Ph.D.



UF | ICBR
2026

Mariza Miranda, Ph.D.
*Scientific Director,
Cytometry*



Doug Smith
*Core Research Facility
Specialist III
Cytometry*



Daniil Shabashvili
*Assistant Scientist
Cytometry*



Brittany Rein
*Core Research Facility
Specialist I
Cytometry*



Matthew Cowras
*Core Research Facility
Technician III,
Cytometry*



Kimberly Backer-Kelley
*Core Research Facility
Technician III,
Cytometry*

BI



CY



EM



GE



MA



NS



PM



BS



HR



PR



FN



CI





Electron Microscopy

[← Home](#)

Steven Madore, Ph.D.



Paul R. Chipman
*Scientific Director,
Electron Microscopy*



Karen Kelley
*Core Research Facility
Specialist III,
Electron Microscopy*



Mary Gragg
*Core Research Facility
Specialist I,
Electron Microscopy*



TBD
*Core Research Facility
Specialist I,
Electron Microscopy*



Quintton Cooper
*Core Research Facility
Technician III,
Electron Microscopy*

BI



CY



EM



GE



MA



NS



PM



BS



HR



PR



FN



CI





Gene Expression & Genotyping

[← Home](#)

Steven Madore, Ph.D.



UF | ICBR
2026

Yanping Zhang, Ph.D.
*Scientific Director,
Gene Expression &
Genotyping*



Kat Libby
*Core Research Facility
Technician III
Gene Expression & Genotyping*



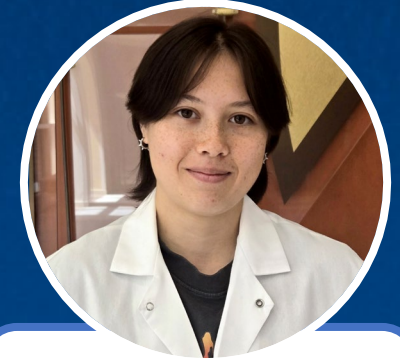
Ru Dai
*Core Research Facility
Specialist III,
Gene Expression & Genotyping*



Brandon Wilson
*Core Research Facility
Technician III,
Gene Expression & Genotyping*



Mark Renshaw
*Core Research Facility
Specialist II,
Gene Expression & Genotyping*



Sonya Babski
*OPS Lab Technician,
Gene Expression & Genotyping*

BI



CY



EM



GE



MA



NS



PM



BS



HR



PR



FN



CI





Monoclonal Antibody

[← Home](#)

Steven Madore, Ph.D.



Angel Sampson, Ph.D.
*Scientific Director,
Monoclonal Antibody*



Shadi Bootorabi
*Core Research Facility
Specialist II,
Monoclonal Antibody*



Benjamin Eikwort
*Core Research Facility
Technician III
Monoclonal Antibody*

BI



CY



EM



GE



MA



NS



PM



BS



HR



PR



FN



CI





NextGen DNA Sequencing

[← Home](#)

Steven Madore, Ph.D.



UF | ICBR
2026

Diansy Zincke, Ph.D.
*Scientific Director,
NextGen DNA Sequencing*



Andrew Trujillo
*Core Research Facility
Specialist I,
NextGen DNA Sequencing*



Xiao Hui Zhou, B.S.
*Core Research Facility
Specialist I,
NextGen DNA Sequencing*



Yvette Zerry
*Core Research Facility
Specialist I,
NextGen DNA Sequencing*



Shanmugam Rajasekar
*Core Research Facility
Specialist II,
NextGen DNA Sequencing*



Maggie Repsold
*Core Research Facility
Technician III
NextGen DNA Sequencing*

BI



CY



EM



GE



MA



NS



PM



BS



HR



PR



FN



CI





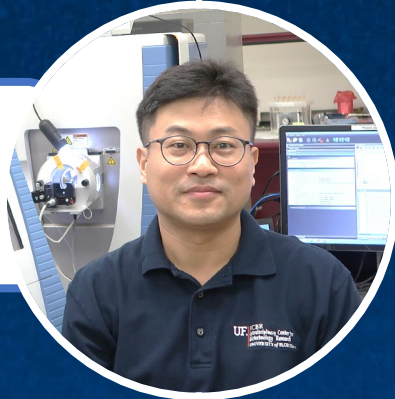
Proteomics & Mass Spectrometry

[← Home](#)

Steven Madore, Ph.D.



Jin Koh, Ph.D.
*Scientific Director,
Proteomics & Mass Spectrometry*



Ran Zheng, M.S.
*Core Research Facility Specialist II,
Proteomics & Mass Spectrometry*



Ning Zhu, M.S.
*Core Research Facility Specialist II,
Proteomics & Mass Spectrometry*



TBD
*Proteomics OPS Lab Technician
Proteomics & Mass Spectrometry*

BI



CY



EM



GE



MA



NS



PM



BS



HR



PR



FN



CI





Business Services

[← Home](#)

Nadia Brown



UF | ICBR

2026



Connie Caudle
*Finance Manager,
Business Services*



Ariel Wilson
*Administrative Assistant
III,
Business Services*



Michelle Francis
*Administrative Specialist I,
Business Services*



Thierry Woods
*Administrative Specialist II,
Business Services*

BI



CY



EM



GE



MA



NS



PM



BS



HR



PR



FN



CI





Human Resources

[← Home](#)

Nadia Brown



Lana Marshall
*Human Resources
Generalist II,
Human Resources*

BI



CY



EM



GE



MA



NS



PM



BS



HR



PR



FN



CI





Anna-Lisa Paul, Ph.D.



Clinton Collins
Section Director,
Cyberinfrastructure



Michael Harrison
IT Analyst I,
Cyberinfrastructure



Emma Raymaker
Systems Administrator/
Programmer II,
Cyberinfrastructure



Ben Thebaut
IT Analyst II,
Cyberinfrastructure



Tristan Whitehill
Systems Administrator/
Programmer II
Cyberinfrastructure

